

# Expanding Opportunities, Improving Lives

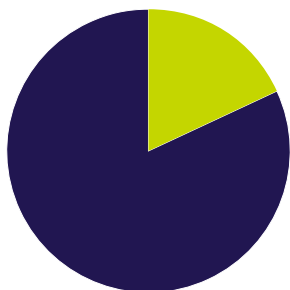
MARYLAND'S OUT OF SCHOOL TIME PROGRAMS

Every **\$1** invested in Maryland afterschool programs leads to a return on investment of **\$3.36!**

The hours from 3 p.m. to 6 p.m. and the summer months have long been recognized as a vulnerable time for youth. When young people are connected to out-of-school time programs, these hours can be transformed from "vulnerable hours" to "hours of opportunity."



Maryland has the **OPPORTUNITY** to invest in more students every day!



**17%**

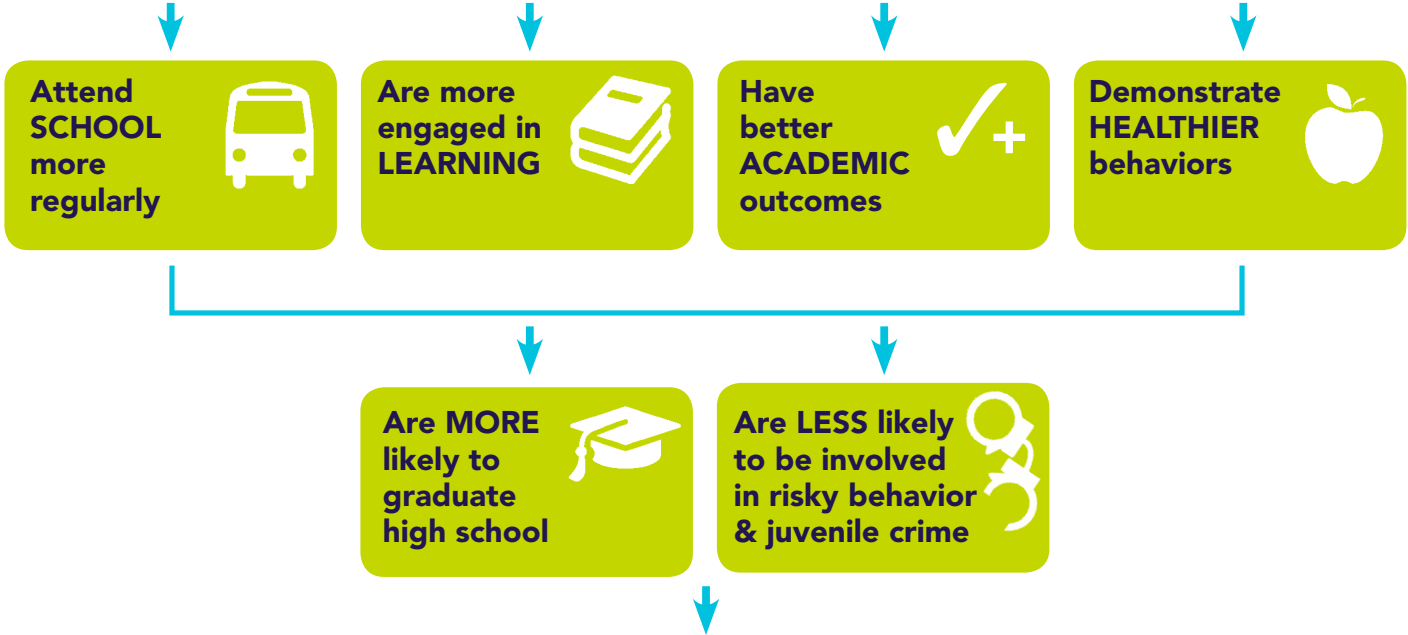
Just 17% of Maryland's students (K-12) participate in afterschool programs.<sup>1</sup>



**296,374**

The number of children in Maryland that would participate in an afterschool program if one were available.<sup>2</sup>

Maryland students who regularly participate in quality afterschool programs....



Are better positioned to ...  
Advance their EDUCATIONS  
Further their CAREERS, and  
Contribute to a  
STRONGER MARYLAND



86% of adults surveyed in Maryland support public funding for afterschool programs.<sup>3</sup>

Nearly 1 in 3 Maryland students are unsupervised for an average of 10 hours per week.<sup>4</sup>



**An investment in quality afterschool programs is an investment in raising graduation rates, lowering juvenile crime, and strengthening Maryland's future generations.**

## WHAT'S OUR ROI?

**For every dollar invested in afterschool programs, Maryland sees an estimated return on investment (ROI) of \$3.36!**

Research shows that quality afterschool programs can reduce chronic absenteeism in school, which has been associated with reducing student dropout rates.

In doing so, afterschool programs contribute to increased societal gains from graduates' taxable earnings AND increased societal savings by preventing juvenile and adult incarceration.

# \$3.36



## HOW DO WE COMPARE?

A Return on Investment (ROI) is a formal method of analysis used to compare the dollar value of benefits of programs to the total cost of the programs. Maryland Out of School Time Network's ROI calculations are within the range of similar studies conducted on afterschool programs. Findings from these similar studies include:

- **\$2.50:** A UCLA study on afterschool programming's impact only factoring in crime savings (2007)<sup>7</sup>
- **\$2.99–\$4.05:** A Claremont Rose Study on the non-crime benefits for every dollar spent on an afterschool programming act (2002)<sup>8</sup>
- **\$4.47:** A Minnesota study on afterschool interventions with young, high-risk youth (2007)<sup>9</sup>

**During the school year, Maryland afterschool programs that provide a daily snack and meal can receive federal reimbursements of up to \$671.40 per student, per school year.<sup>5</sup>**

# \$671.40

**For WORKING PARENTS, Quality Afterschool Programs can:**

- Provide safe, supervised opportunities for their children.
- Reduce anxiety during the hours after school.
- Reduce distracting phone calls from children and caregivers.
- Contribute to increased employee engagement.<sup>6</sup>



The **Maryland Out of School Time Network (MOST)** is a statewide youth development organization, dedicated to more and better opportunities in the out of school hours for all of Maryland's young people. MOST is one of 47 statewide afterschool networks made possible by the generous support of the Charles Stewart Mott Foundation and local matching investment.

**FINDING:** Every \$1 invested in Maryland afterschool programs leads to a return on investment of \$3.36.

**METHODOLOGY:** MOST hypothesized a 20% increased investment on afterschool participation. MOST then multiplied this increase with the current Maryland student dropout rate,<sup>10</sup> followed by a research-based, anticipated reduction in dropout rates due to afterschool programming.<sup>11</sup> The resulting figure was multiplied by the collective cost for each high school dropout over the course of their working life.<sup>12</sup> This total estimated future cost savings was divided by the initial investment in a 20% increase in the average cost of afterschool participation in Maryland<sup>13</sup> to yield the return on investment. For this project, MOST engaged Sharp Insight, LLC, an independent evaluation firm.

**LIMITATIONS:** Maryland Out-of-School Time Network's return on investment calculations were estimated based on the cost of one year of program dosage. This determination was made due to the absence of peer-reviewed research documenting the optimal number of years (dosage) necessary to receive maximum program benefit. If such research is found in the future, this formula would need to be recalculated. Additionally, recent Maryland legislation increased the minimum for high school drop-out ages, which were not factored into future projections. Finally, as more detailed data from program evaluations and financials become available, more complete and accurate return-on-investment studies will be completed.

**Expanding Opportunities, Improving Lives was made possible by support provided by the Governor's Office for Children (GOC). GOC works to promote health and wellness among youth, and seeks to address the priorities of Maryland's children. For more information about the Governor's Office for Children visit [www.goc.maryland.gov](http://www.goc.maryland.gov).**

**Join** our community of people and organizations committed to increasing the quantity and quality of out of school time learning opportunities in Maryland:

- **Stay informed** by signing up for our email newsletter at [www.mdoutofschooltime.org](http://www.mdoutofschooltime.org)
- **Follow us** on Twitter (@mostnetwork)
- **Like us** on Facebook ([www.facebook.com/mdoutofschooltime](http://www.facebook.com/mdoutofschooltime))

#### SOURCES:

- 1 Afterschool Alliance. (October 2009). America After 3PM: [http://www.afterschoolalliance.org/AA3\\_Full\\_Report.pdf](http://www.afterschoolalliance.org/AA3_Full_Report.pdf).
- 2 Afterschool Alliance, *op. cit.*
- 3 Afterschool Alliance, *op. cit.*
- 4 Afterschool Alliance, *op. cit.*
- 5 Montgomery County Collaboration Council. (Unpublished Data, July 2014). Excel Beyond the Bell federal reimbursement per student, per day during the 2013-14 program year.
- 6 Corporate Voices for Working Families. (2006). Afterschool Toolkit: Community to Business: <http://www.afterschoolalliance.org/AS2booklet.pdf>.
- 7 Goldschmidt, Peter and Huang, Denise (2007), *The Long-Term Effects of After-School Programming on Educational Adjustment and Juvenile Crime: A Study of LA's BEST After-School Program*. University of California, Los Angeles.
- 8 Brown, William, et al. (September 2002). "The Costs and Benefits of After School Programs: Estimated Effects of the After School Education and Safety Program Act of 2002. Rose Institute. Claremont, CA.
- 9 Anton, Paul and Temple, Judy (2007) *Analyzing the Social Return on Investment in Youth Intervention Programs: A framework for Minnesota*. St. Paul, Minnesota.
- 10 Dropout rate: 4-year adjusted cohort, Maryland Class of 2013: <http://datacenter.kidscount.org/data/tables/7650-dropout-rate-4-year-adjusted-cohort?loc=22&loct=2#detailed/2/any/false/1243,1147,1146,1020/any/14802,14803>.
- 11 Brown, *op. cit.*
- 12 Sum, Andrew, et al. (October 2009). The Consequences of Dropping Out of High School: Joblessness and Jailing for High School Dropouts and the High Cost for Taxpayers. Center for Labor Market Studies, Northeastern University, Boston, MA.
- 13 Maryland Out of School Time Network. (Unpublished, 2013). \$1800 Average Cost of Afterschool Programming in Maryland Per Student.