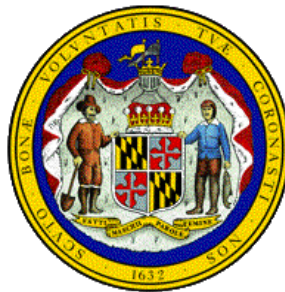




Governor's Office for Children
Promoting the well-being of Maryland's children

The Children's Services Outcomes Measurement System (CSOMS)

Annual System Implementation Report FY 2013



Submitted by the
Governor's Office for Children

October 1, 2013

Table of Contents

- Children’s Services Outcomes Measurement System (CSOMS) Overview 2
- CSOMS Implementation Status 2
- System Improvements Process 6
- CSOMS Training and Technical Assistance 7
- APPENDIX A: 8
- APPENDIX B: 15

Children's Services Outcomes Measurement System (CSOMS) Overview

The Children's Services Outcomes Measurement System has been operational since July 1, 2008 and was developed in accordance with Human Services Article, § 8-1004, Annotated Code of Maryland, to use standardized measurements to evaluate out-of-home placement program performance and children's outcomes. CSOMS allows children's services providers to enter child-specific data about a child's placement, living environment, family situation, educational and vocational development, and progress in learning positive behavioral habits. Through a sub-module in CSOMS, service providers also use Child and Adolescent Needs and Strengths (CANS) assessments to evaluate children's and families' outcomes in a variety of life domains. CSOMS has the capability to generate reports at an individual, program, jurisdiction, or agency level and reports can be utilized to understand program outcomes and for monitoring by State and local agency staff.

CSOMS is a module included in the State Child, Youth, and Family Information System (SCYFIS), administered by the Governor's Office for Children (GOC) on behalf of the Children's Cabinet. SCYFIS is a platform for other systems that track psychiatric hospitalizations of children and to facilitate applications for a license to operate a Residential Child Care Program (RCCP). The Resource Directory module in SCYFIS, which can be accessed by the public, includes information on a wide array of residential care providers in Maryland and out-of-State providers that serve Maryland children. SCYFIS has the capability to connect information about service providers in the Resource Directory to each program's outcomes data in CSOMS.

Ensuring that the system is fully utilized by the appropriate service providers continues to provide challenges. Not all cases are being entered into CSOMS or updated in a timely manner and, of the cases that are entered, a high percentage contain no CANS assessment data. This can prevent programs and State agencies from better understanding the outcomes associated with the services that children in residential programs receive.

GOC and other child-serving State agencies are working to improve utilization of CSOMS through trainings and work group discussions which allow for providers to share concerns and provide feedback on system enhancements. Agencies are building utilization of CSOMS into their contracts with service providers to ensure better compliance with mandated utilization requirements. Through a coordinated approach that involves the interests of the service provider community as well as the child-serving State agencies, GOC strives to increase the use and reliability of CSOMS.

CSOMS Implementation Status

CSOMS has been used to gather information on services provided to children by RCCPs since its inception in 2008, and private Treatment Foster Care providers (TFCs) since July 1, 2009.¹ Utilization of CSOMS to monitor children's outcomes and program performance is driven by State agencies' contracts with service providers, as mandated by statute. In 2013, DHR instituted performance-based contracting with RCCPs that required the use of the CANS assessments in CSOMS. GOC has led continuing efforts to increase the utilization of CSOMS by facilitating stakeholder workgroups focused on improving the system's measurement of outcomes and conducting trainings for service providers and agency staff on how to use the system.

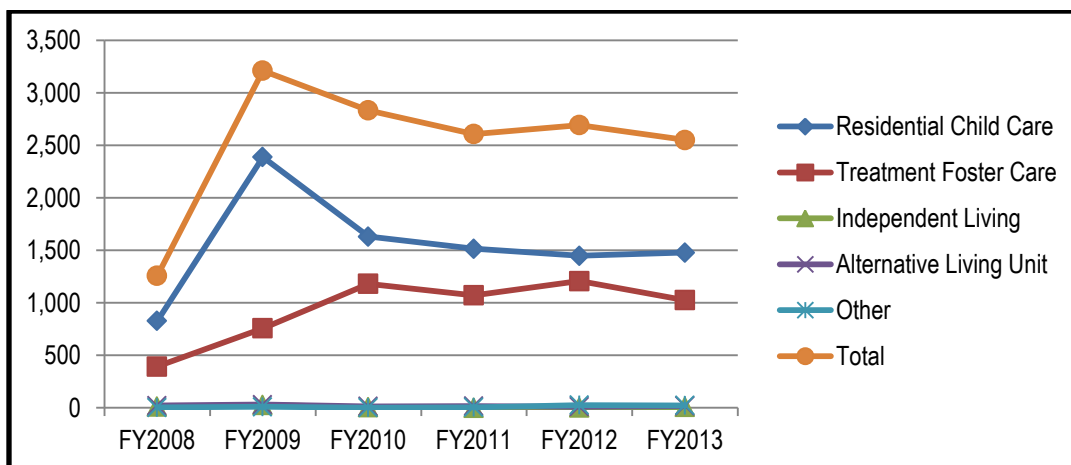


TABLE 1: CSOMS Cases Added by Placement Category							
	FY2008	FY2009	FY2010	FY2011	FY2012	FY2013	Total
Residential Child Care	828	2,387	1,631	1,514	1,447	1,478	9,285
Treatment Foster Care	393	757	1,181	1,071	1,207	1,026	5,635
Independent Living	11	27	4	0	1	7	50
Alternative Living Unit	22	31	14	17	11	16	111
Other	3	9	2	5	26	23	68
Total	1,257	3,211	2,832	2,607	2,692	2,550	15,149

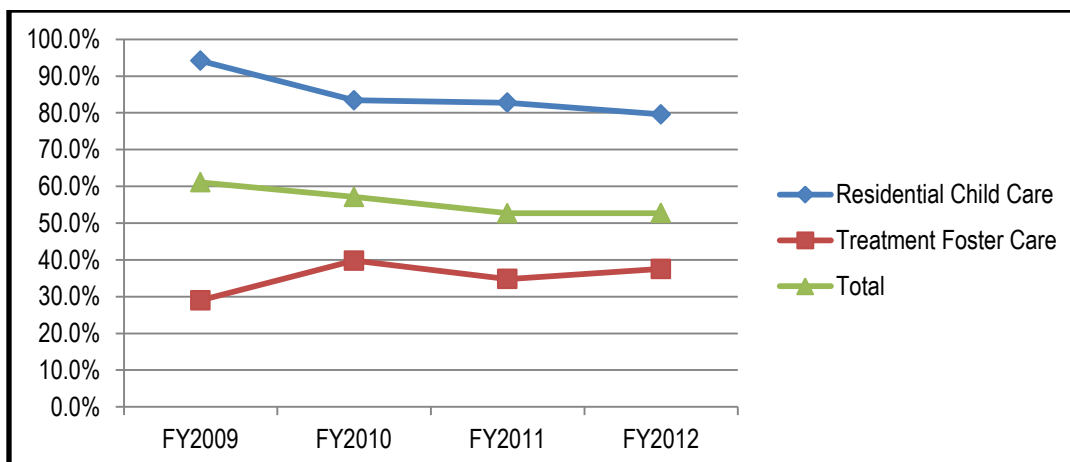
Since FY2008, more than 15,000 cases have been entered into CSOMS. The majority of those cases are children in RCCPs and TFCs, although a small percentage of cases each fiscal year are children in

¹ The 2009 legislation also required foster homes approved by Local Departments of Social Services and residential programs operated by or under contract with the Department of Juvenile Services (DJS) (except detention facilities and shelters) to use the outcomes measurement system as of July 1, 2011. Public Foster Care and DJS facilities serve populations that are different than RCCPs and PTFCPs. Both the Department of Human Resources (DHR) and DJS have implemented data collection systems that are mandated through other statutes. Federal requirements restrict staff for those agencies from entering child-specific data into multiple systems.

Independent Living Programs and Alternative Living Units. As Table 1 illustrates above, the largest number of cases added to CSOMS are RCCP cases, followed by TFC cases. Because of the requirement that TFC cases be entered into CSOMS in FY2009, there was an increase in cases entered from FY2009 to FY2010.

	FY2009	FY2010	FY2011	FY2012
Residential Child Care	2,535	1,955	1,829	1,818
Treatment Foster Care	2,611	2,967	3,080	3,217

The cases entered into CSOMS represent a portion of the total number of children that are placed each year into RCCPs and TFCs. Full utilization of CSOMS would be attained if the total number of children placed in these out-of-home placements was entered into CSOMS. Based on the State of Maryland's FY2012 Out-of-Home Placement and Family Preservation Resource Plan, an estimate of the number of new cases placed into RCCPs and TFCs is 1,818 and 3,217 cases for FY2012, respectively (Table 2).²



	FY2009	FY2010	FY2011	FY2012
Residential Child Care	94.2%	83.4%	82.8%	79.6%
Treatment Foster Care	29.0%	39.8%	34.8%	37.5%
Total	61.1%	57.1%	52.7%	52.7%

² The estimated number of newly placed cases is the product of: the percentage of RCCP cases of total Community-Based placements and the percentage of TFC cases of total Family Home placements from the one-day census totals for each fiscal year multiplied by the number of "entries" during the corresponding fiscal year for each respective placement category (Community-Based and Family Home Placements). The one-day census and number of entries are based on the total in-State placements (as opposed to out-of-State placements).

According to an estimate of the number of cases entered into CSOMS by placement category out of the total number of cases actually placed during that time period, the percentage of cases entered into CSOMS in FY2012 is about half of the actual total (Table 3). About 80% of RCCP cases are estimated to be entered out of all newly placed RCCP cases and roughly between 35% and 40% of TFC cases are entered. CSOMS users are not generally required to enter cases into CSOMS that are open for less than 30 days (exception based on the requirement that programs have up to 30 days after admission to enter a case into CSOMS), but the estimated number of entries includes these populations. As a result, the percentage of cases entered into CSOMS of the total will be lower. The discrepancy among cases that have been entered into CSOMS and the higher estimated total indicates that more work may be needed to ensure that CSOMS is utilized by all relevant service providers as required.

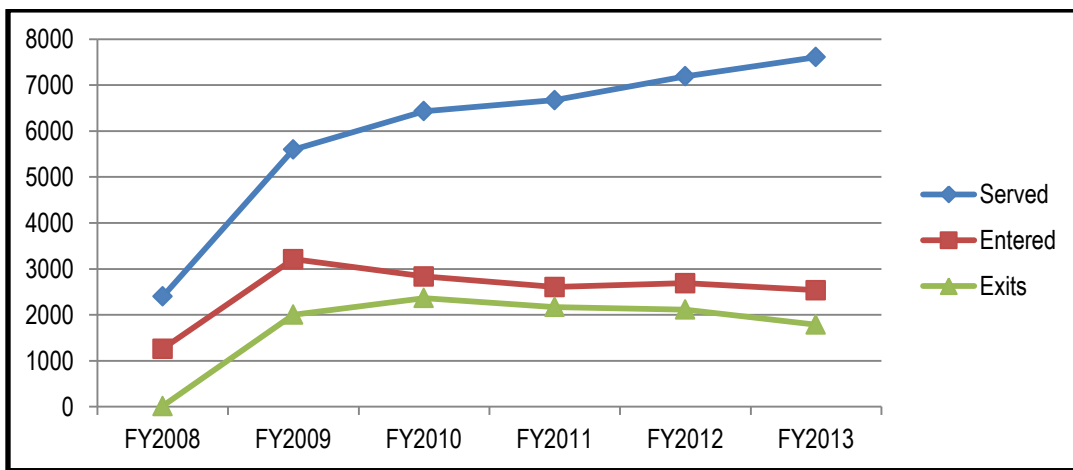


TABLE 4: Cases Served, Entered, and Exited in CSOMS						
	FY2008	FY2009	FY2010	FY2011	FY2012	FY2013
Served	2,400	5,597	6,431	6,671	7,190	7,611
Entered	1,259	3,210	2,835	2,606	2,690	2,534
Exits	13	2,001	2,366	2,171	2,113	1,787

Another indicator of system utilization is the timeliness by which service providers update cases based on developments in the case. As shown in Table 4, fewer cases that are entered into CSOMS each fiscal year are exited from the system. If the actual number of total placements is decreasing each year, then the number of exits should exceed the number of cases entered. When cases that are entered into CSOMS are not recorded as exited, the result is a compounding number of cases currently open in the system, or “served.”³ More timely and accurate entry of data in CSOMS will mean that CSOMS will accurately reflect new placement and exit information.

³ The tables in Appendix A give a detailed breakdown of the number of cases entered and exited by jurisdiction.

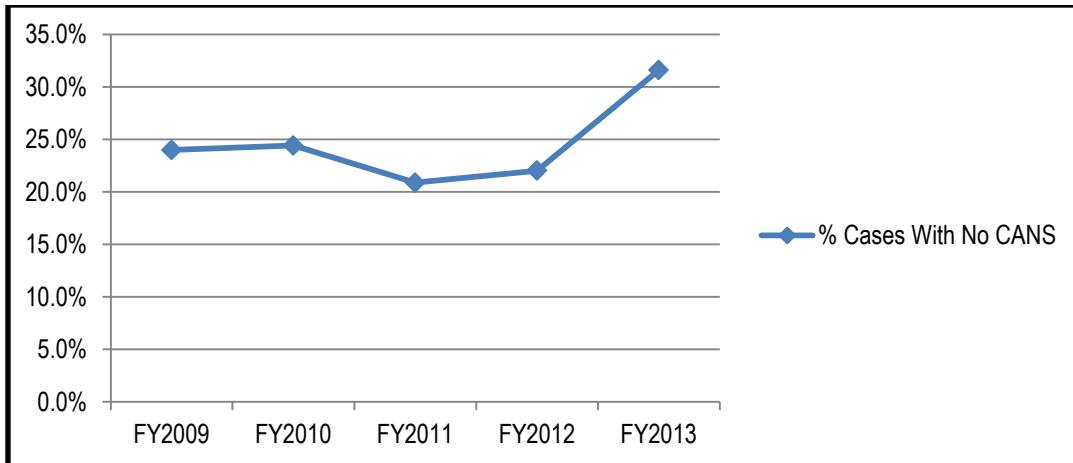


TABLE 5: Cases With No CANS Assessment Completed

	FY2009	FY2010	FY2011	FY2012	FY2013
Cases Requiring a CANS Assessment	2,770	2,547	2,353	2,439	2,241
Cases With No CANS	661	619	490	535	708
% Cases With No CANS	23.9%	24.3%	20.8%	21.9%	31.6%

One of the most important aspects of CSOMS is CANS assessments, which provide a measure of how each child is progressing while in placement and if the child exhibits a change in needs and strengths during the placement. As shown in Table 5, from FY2009 through FY2012, the percentage of cases with no CANS assessments completed has been between 20% and 25% of cases that require a CANS assessment (excluding cases exited in less than 30 days after placement date and for children under age 5).⁴ More than 30% of cases entered in FY2013 do not have a CANS assessment as of this Report; that percentage, however, is likely to decrease because many CANS assessments are completed months after the date when the initial CANS assessment is due. This figure reflects cases with no CANS assessments where at least one is required but not cases that have an insufficient number of complete assessments (every three months following the initial CANS assessment). Many of the outcomes in CSOMS are evaluated by data from the CANS assessments, which is why it is essential that service providers complete CANS assessments for every case as required.

System Improvements Process

The Governor’s Office for Children (GOC) reconvened the CSOMS stakeholder groups beginning in August 2012 to make recommendations for system enhancements. The purpose of the groups is to make recommendations for system enhancements that will increase the usefulness of CSOMS to providers and

⁴ Cases placed in Independent Living Programs, Alternative Living Units, and other types of placements are included as a portion of the overall “Cases Requiring a CANS Assessment,” but only constitute 2% or fewer of overall cases that require a CANS assessment. It is unknown how many of the “Cases With No CANS” are from these placement categories.

State agencies and improve policies and procedures to ensure that the data is entered consistently, timely, and accurately. Following a months-long stakeholder engagement process from 2012 through 2013, workgroups made recommendations about performance measures the system could use to evaluate children's outcomes (Appendix B). Providers also communicated an interest in being able to access their information from CSOMS so the data could be used to better inform users about the services they provide. In October 2013, GOC, in collaboration with The Institute for Innovation and Implementation at the University of Maryland School of Social Work (The Institute), will provide that access. Training and technical assistance will be provided. Data will be exported from CSOMS to relevant providers on a quarterly basis and training will continue through regional forums.

CSOMS continuously undergoes system improvements. Part of that process involves the conversion of the platform on which CSOMS is built (SCYFIS) to a more flexible, efficient environment, which would facilitate system updates and enhancements. In June 2013, GOC held a strategic planning meeting with administrators and researchers from DHR, Department of Information Technology (DoIT), and the Department of Juvenile Services (DJS) to determine the course of action for upgrading the information technology capacity for SCYFIS, completing the system conversion, and building the recommended enhancements into the system. As enhancements are made, provider and stakeholder feedback will be incorporated to the recommended performance measures proposed in Appendix B of this Report.

CSOMS Training and Technical Assistance

GOC staff has conducted basic training sessions on CSOMS, which have been offered to service provider personnel, including program administrators, clinicians, case managers, and any staff who enter data into CSOMS or who utilize CSOMS as a tool for program monitoring. The training covers a range of topics from entering a case into CSOMS, to managing a case, completing a CANS assessment in the system, using the Resource Directory, adding and editing foster parent information, and utilizing system reports. All information for the service provider training is available on the GOC website⁵ and includes instructions for performing case management functions, utilizing system tools, and the presentation used during the basic training. Quarterly trainings are available online via webinar and are open to all who register.

Technical assistance is offered by GOC to service provider personnel and State or local agency staffs who have an account to use CSOMS. GOC system administrators also assist with adding and managing user accounts.

⁵ http://goc.maryland.gov/scyfis_module.html.

APPENDIX A:

CSOMS Implementation Status Reports

FY2008 – FY2012



Status Report - Served By Jurisdiction

Start Date: 07/01/2007- End Date: 06/30/2008

Jurisdiction	Population Flow Counts: Children								Leading Referral Agency: % Breakdown of Referrals									
	First Day	Newly Served	Newly Served		Last	Avg LOS	DHR	CSA	DJ	DDA	MHA	MSDE		Missing	In-State Private	OOS Agencies	OOS Private Pay & N/A	
Male	Female	Served	Exit	Day	(Weeks)	LSS												
Allegany County	6	7	6	1	13	0	13	0.00	62%	0%	38%	0%	0%	0%	0%	0%	0%	0%
Anne Arundel County	28	41	25	16	69	0	69	0.00	80%	0%	14%	0%	0%	6%	0%	0%	0%	0%
Baltimore City	600	523	301	222	1,123	4	1,119	49.00	92%	0%	5%	0%	0%	3%	0%	0%	0%	0%
Baltimore County	144	165	97	68	309	2	307	113.00	91%	0%	5%	0%	0%	4%	0%	0%	0%	0%
Calvert County	7	17	14	3	24	0	24	0.00	50%	0%	46%	0%	0%	4%	0%	0%	0%	0%
Caroline County	3	3	2	1	6	0	6	0.00	33%	17%	33%	0%	0%	17%	0%	0%	0%	0%
Carroll County	6	16	12	4	22	1	21	10.00	32%	0%	59%	0%	0%	9%	0%	0%	0%	0%
Cecil County	12	11	7	4	23	0	23	0.00	96%	0%	0%	0%	0%	4%	0%	0%	0%	0%
Charles County	9	11	4	7	20	0	20	0.00	70%	0%	25%	5%	0%	0%	0%	0%	0%	0%
Dorchester County	0	5	5	0	5	0	5	0.00	0%	0%	100%	0%	0%	0%	0%	0%	0%	0%
Frederick County	24	29	15	14	53	1	52	77.00	81%	0%	13%	0%	0%	6%	0%	0%	0%	0%
Garrett County	3	1	1	0	4	0	4	0.00	75%	0%	25%	0%	0%	0%	0%	0%	0%	0%
Harford County	26	56	40	16	82	1	81	7.00	76%	1%	22%	0%	0%	1%	0%	0%	0%	0%
Howard County	8	17	12	5	25	0	25	0.00	72%	0%	8%	0%	0%	16%	0%	4%	0%	0%
Kent County	4	6	6	0	10	0	10	0.00	10%	0%	60%	0%	0%	20%	0%	10%	0%	0%
Montgomery County	61	75	48	27	136	0	136	0.00	72%	1%	15%	1%	0%	10%	0%	1%	0%	0%
Out Of State	36	29	19	10	65	1	64	-12.00	2%	6%	5%	3%	2%	6%	0%	0%	63%	14%
Prince George's County	85	108	68	40	193	0	193	0.00	87%	0%	12%	0%	0%	2%	0%	0%	0%	0%
Queen Anne's County	4	5	4	1	9	0	9	0.00	33%	0%	44%	11%	0%	0%	0%	11%	0%	0%
Somerset County	10	12	6	6	22	0	22	0.00	100%	0%	0%	0%	0%	0%	0%	0%	0%	0%
St. Mary's County	13	20	15	5	33	1	32	44.00	82%	0%	15%	0%	0%	3%	0%	0%	0%	0%
Talbot County	9	3	1	2	12	0	12	0.00	83%	0%	17%	0%	0%	0%	0%	0%	0%	0%
Washington County	16	59	46	13	75	0	75	0.00	60%	0%	40%	0%	0%	0%	0%	0%	0%	0%
Wicomico County	16	30	15	15	46	2	44	24.00	80%	4%	15%	0%	0%	0%	0%	0%	0%	0%
Worcester County	11	10	3	7	21	0	21	0.00	90%	0%	10%	0%	0%	0%	0%	0%	0%	0%
All Jurisdictions:	1141	1259	772	487	2400	13	2387	46.00	83.34%	0.00%	10.42%	0.42%	0.00%	3.52%	0.00%	0.21%	1.72%	0.38%

Summary Report

S 97.70% **IP** 0.21% **OP:** 0.38% **O:** 1.72%
DHR: 83.34% **CS** 0.00% **MHA:** 0.00% **OOS Private Pay:** 0.00%
DJS: 10.42% **DDA** 0.42% **MSDE/LSS:** 3.52% **N/A:** 0.38%

Note: S (Maryland State Agency DHR, CSA, DJS, DDA, MHA, MSDE/LSS), IP (In-State Maryland Private Pay), OP (Out-of-State Private Pay and N/A), O (Out-of-State Agency)



Status Report - Served By Jurisdiction

Start Date: 07/01/2008- End Date: 06/30/2009

Jurisdiction	Population Flow Counts: Children								Leading Referral Agency: % Breakdown of Referrals									
	First Day	Newly Served	Newly Served Male	Newly Served Female	Served	Exits	Last Day	Avg LOS (Weeks)	DHR	CSA	DJ	DDA	MHA	MSDE /LSS	Missing	In-State Private	OOS Agencies	OOS Private Pay & N/A
Allegany County	13	21	11	10	34	11	23	37.00	68%	0%	32%	0%	0%	0%	0%	0%	0%	0%
Anne Arundel County	69	127	101	26	196	92	104	27.00	59%	1%	37%	0%	0%	4%	0%	0%	0%	0%
Baltimore City	1,119	1,391	855	536	2,510	774	1,736	30.00	85%	0%	13%	0%	0%	2%	0%	0%	0%	0%
Baltimore County	307	357	220	137	664	242	422	37.00	85%	0%	12%	0%	0%	2%	0%	0%	0%	0%
Calvert County	24	28	18	10	52	23	29	19.00	48%	0%	50%	0%	0%	2%	0%	0%	0%	0%
Caroline County	6	19	13	6	25	6	19	58.00	44%	12%	36%	0%	0%	4%	0%	4%	0%	0%
Carroll County	21	63	42	21	84	60	24	20.00	29%	0%	69%	0%	0%	2%	0%	0%	0%	0%
Cecil County	23	22	14	8	45	15	30	32.00	76%	4%	18%	0%	0%	2%	0%	0%	0%	0%
Charles County	20	32	20	12	52	25	27	33.00	56%	0%	40%	2%	0%	2%	0%	0%	0%	0%
Dorchester County	5	9	5	4	14	6	8	34.00	50%	0%	43%	0%	7%	0%	0%	0%	0%	0%
Frederick County	52	83	50	33	135	75	60	26.00	73%	0%	24%	0%	0%	3%	0%	0%	0%	0%
Garrett County	4	25	17	8	29	14	15	68.00	76%	0%	24%	0%	0%	0%	0%	0%	0%	0%
Harford County	81	92	50	42	173	77	96	31.00	75%	1%	23%	0%	0%	1%	0%	0%	0%	0%
Howard County	25	42	28	14	67	35	32	23.00	73%	0%	18%	0%	0%	7%	0%	1%	0%	0%
Kent County	10	12	9	3	22	8	14	47.00	23%	0%	64%	0%	0%	9%	0%	5%	0%	0%
Montgomery County	136	262	129	133	398	192	206	28.00	76%	1%	18%	0%	0%	4%	0%	1%	0%	0%
Out Of State	64	58	37	21	122	23	99	68.00	4%	3%	5%	2%	1%	6%	0%	0%	69%	11%
Prince George's County	193	296	174	122	489	111	378	32.00	77%	0%	22%	0%	0%	1%	0%	0%	0%	0%
Queen Anne's County	9	32	14	18	41	22	19	55.00	41%	0%	51%	5%	0%	0%	0%	2%	0%	0%
Somerset County	22	16	9	7	38	9	29	34.00	92%	0%	8%	0%	0%	0%	0%	0%	0%	0%
St. Mary's County	32	34	15	19	66	19	47	21.00	77%	0%	20%	0%	2%	2%	0%	0%	0%	0%
Talbot County	12	12	9	3	24	4	20	22.00	75%	0%	25%	0%	0%	0%	0%	0%	0%	0%
Washington County	75	107	59	48	182	121	61	36.00	68%	0%	32%	0%	0%	0%	0%	0%	0%	0%
Wicomico County	44	41	24	17	85	22	63	44.00	69%	2%	27%	0%	0%	1%	0%	0%	0%	0%
Worcester County	21	29	19	10	50	15	35	39.00	66%	2%	32%	0%	0%	0%	0%	0%	0%	0%
All Jurisdictions:	2387	3210	1942	1268	5597	2001	3596	32.00	76.95%	0.02%	18.80%	0.27%	0.00%	2.05%	0.00%	0.16%	1.53%	0.23%

Summary Report

S 98.08% **IP:** 0.16% **OP:** 0.23% **O** 1.53%
DHR: 76.95% **CS** 0.02% **MHA:** 0.00% **OOS Private** 0.00%
DJS: 18.80% **DDA** 0.27% **MSDE/LS** 2.05% **N/A:** 0.23%

Note: **S** (Maryland State Agency *DHR, CSA, DJS, DDA, MHA, MSDE/LSS*), **IP** (In-State Maryland Private Pay), **OP** (Out-of-State Private Pay and N/A), **O** (Out-of-State Agency)



Status Report - Served By Jurisdiction

Start Date: 07/01/2009- End Date: 06/30/2010

Jurisdiction	Population Flow Counts: Children								Leading Referral Agency: % Breakdown of Referrals									
	First	Newly Served	Newly Served Male	Newly Served Female	Served	Exits	Last Day	Avg LOS (Weeks)	DHR	CSA	DJ	DDA	MHA	/LSS	Missing	In-State Private	OOS Agencies	OOS Private Pay & N/A
Allegany County	23	20	13	7	43	17	26	39.00	58%	0%	42%	0%	0%	0%	0%	0%	0%	0%
Anne Arundel County	104	100	57	43	204	87	117	53.00	62%	0%	35%	0%	0%	3%	0%	0%	0%	0%
Baltimore City	1,736	1,184	649	535	2,920	913	2,007	64.00	88%	0%	10%	0%	0%	1%	0%	0%	0%	0%
Baltimore County	422	305	165	140	727	278	449	58.00	87%	0%	11%	1%	0%	1%	0%	0%	0%	0%
Calvert County	29	13	7	6	42	18	24	63.00	62%	0%	38%	0%	0%	0%	0%	0%	0%	0%
Caroline County	19	23	19	4	42	17	25	65.00	50%	2%	43%	0%	0%	2%	0%	2%	0%	0%
Carroll County	24	27	19	8	51	24	27	33.00	41%	0%	57%	0%	0%	2%	0%	0%	0%	0%
Cecil County	30	37	22	15	67	37	30	45.00	82%	0%	16%	0%	0%	1%	0%	0%	0%	0%
Charles County	27	48	33	15	75	32	43	36.00	52%	1%	45%	1%	0%	0%	0%	0%	0%	0%
Dorchester County	8	15	9	6	23	6	17	44.00	70%	0%	30%	0%	0%	0%	0%	0%	0%	0%
Frederick County	60	71	39	32	131	75	56	38.00	81%	0%	17%	0%	0%	2%	0%	0%	0%	0%
Garrett County	15	22	14	8	37	22	15	31.00	76%	0%	24%	0%	0%	0%	0%	0%	0%	0%
Harford County	96	77	46	31	173	65	108	56.00	84%	1%	14%	0%	0%	1%	0%	0%	0%	0%
Howard County	32	25	16	9	57	20	37	66.00	84%	0%	7%	0%	0%	7%	0%	2%	0%	0%
Kent County	14	10	9	1	24	12	12	42.00	38%	0%	46%	0%	0%	13%	0%	4%	0%	0%
Montgomery County	206	200	109	91	406	182	224	47.00	79%	0%	16%	0%	0%	3%	0%	1%	0%	0%
Out Of State	99	70	51	19	169	75	94	72.00	2%	2%	1%	1%	1%	2%	0%	0%	80%	11%
Prince George's County	378	329	183	146	707	241	466	44.00	75%	0%	24%	0%	0%	0%	0%	0%	0%	0%
Queen Anne's County	19	9	6	3	28	12	16	33.00	50%	0%	46%	4%	0%	0%	0%	0%	0%	0%
Somerset County	29	25	8	17	54	17	37	55.00	89%	0%	11%	0%	0%	0%	0%	0%	0%	0%
St. Mary's County	47	45	35	10	92	38	54	54.00	82%	2%	14%	0%	1%	1%	0%	0%	0%	0%
Talbot County	20	10	7	3	30	7	23	77.00	70%	0%	30%	0%	0%	0%	0%	0%	0%	0%
Washington County	61	94	51	43	155	88	67	37.00	81%	0%	19%	0%	0%	0%	0%	0%	0%	0%
Wicomico County	63	49	30	19	112	53	59	57.00	68%	1%	30%	0%	0%	1%	0%	0%	0%	0%
Worcester County	35	27	21	6	62	30	32	48.00	61%	2%	37%	0%	0%	0%	0%	0%	0%	0%
All Jurisdictions:	3596	2835	1618	1217	6431	2366	4065	55.00	79.98%	0.02%	15.86%	0.25%	0.00%	1.31%	0.00%	0.14%	2.14%	0.30%

Summary Report

S 97.42% **IP** 0.14% **OP:** 0.30% **O** 2.14%
DHR: 79.98% **CS** 0.02% **MHA** 0.00% **OOS Private** 0.00%
DJS: 15.86% **DDA** 0.25% **MSDE/LS** 1.31% **N/A:** 0.30%

Note: **S** (Maryland State Agency *DHR, CSA, DJS, DDA, MHA, MSDE/LSS*), **IP** (In-State Maryland Private Pay), **OP** (Out-of-State Private Pay and N/A), **O** (Out-of-State Agency)



Status Report - Served By Jurisdiction

Start Date: 07/01/2010- End Date: 06/30/2011

Jurisdiction	Population Flow Counts: Children							Leading Referral Agency: % Breakdown of Referrals										
	First Served	Newly Served	Newly Served Male	Newly Served Female	Served	Exits	Last Day	Avg LOS (Weeks)	DHR	CSA	DJ	DDA	MHA	MSDE /LSS	Missing	In-State Private	OOS Agencies	OOS Private Pay & N/A
Allegany County	26	34	13	21	60	34	26	33.00	32%	0%	68%	0%	0%	0%	0%	0%	0%	0%
Anne Arundel County	117	74	37	37	191	77	114	44.00	68%	0%	28%	0%	0%	4%	0%	0%	0%	0%
Baltimore City	2,007	983	505	478	2,990	862	2,128	63.00	89%	0%	9%	0%	0%	1%	0%	0%	0%	0%
Baltimore County	449	301	155	146	750	225	525	49.00	88%	0%	10%	1%	0%	1%	0%	0%	0%	0%
Calvert County	24	25	18	7	49	16	33	57.00	63%	4%	33%	0%	0%	0%	0%	0%	0%	0%
Caroline County	25	14	11	3	39	13	26	40.00	56%	0%	41%	0%	0%	0%	0%	3%	0%	0%
Carroll County	27	26	14	12	53	27	26	35.00	53%	0%	45%	0%	0%	2%	0%	0%	0%	0%
Cecil County	30	45	29	16	75	27	48	24.00	77%	0%	21%	0%	0%	1%	0%	0%	0%	0%
Charles County	43	38	26	12	81	43	38	55.00	67%	1%	30%	1%	0%	1%	0%	0%	0%	0%
Dorchester County	17	10	8	2	27	4	23	44.00	63%	0%	33%	0%	0%	4%	0%	0%	0%	0%
Frederick County	56	49	36	13	105	46	59	46.00	85%	0%	11%	0%	0%	4%	0%	0%	0%	0%
Garrett County	15	24	12	12	39	24	15	19.00	85%	0%	15%	0%	0%	0%	0%	0%	0%	0%
Harford County	108	77	52	25	185	66	119	48.00	87%	0%	12%	0%	1%	1%	0%	0%	0%	0%
Howard County	37	36	23	13	73	34	39	66.00	81%	0%	12%	0%	0%	5%	0%	1%	0%	0%
Kent County	12	9	9	0	21	5	16	58.00	38%	0%	48%	0%	0%	10%	0%	5%	0%	0%
Montgomery County	224	178	98	80	402	160	242	39.00	74%	0%	21%	0%	0%	3%	0%	1%	0%	0%
Out Of State	94	46	34	12	140	56	84	46.00	2%	3%	0%	1%	1%	1%	0%	0%	73%	20%
Prince George's County	466	354	215	139	820	223	597	50.00	74%	0%	25%	0%	0%	1%	0%	0%	0%	0%
Queen Anne's County	16	8	4	4	24	9	15	31.00	50%	0%	46%	4%	0%	0%	0%	0%	0%	0%
Somerset County	37	22	14	8	59	21	38	88.00	83%	0%	14%	0%	0%	3%	0%	0%	0%	0%
St. Mary's County	54	54	36	18	108	40	68	53.00	85%	3%	12%	0%	0%	0%	0%	0%	0%	0%
Talbot County	23	11	8	3	34	6	28	91.00	71%	0%	26%	0%	0%	3%	0%	0%	0%	0%
Washington County	67	98	58	40	165	92	73	32.00	78%	0%	19%	0%	0%	0%	0%	0%	2%	2%
Wicomico County	59	65	50	15	124	38	86	52.00	47%	0%	52%	2%	0%	0%	0%	0%	0%	0%
Worcester County	32	25	13	12	57	23	34	56.00	63%	0%	37%	0%	0%	0%	0%	0%	0%	0%
All Jurisdictions:	4065	2606	1478	1128	6671	2171	4500	53.00	80.31%	0.00%	15.85%	0.26%	0.00%	1.37%	0.00%	0.15%	1.59%	0.47%

Summary Report

S 97.79% **IP:** 0.15% **OP:** 0.47% **O** 1.59%
DHR: 80.31% **CS** 0.00% **MHA:** 0.00% **OOS Private** 0.00%
DJS: 15.85% **DDA** 0.26% **MSDE/LS** 1.37% **N/A:** 0.47%

Note: **S** (Maryland State Agency *DHR, CSA, DJS, DDA, MHA, MSDE/LSS*), **IP** (In-State Maryland Private Pay), **OP** (Out-of-State Private Pay and N/A), **O** (Out-of-State Agency)



Status Report - Served By Jurisdiction

Start Date: 07/01/2011- End Date: 06/30/2012

Jurisdiction	Population Flow Counts: Children								Leading Referral Agency: % Breakdown of Referrals										
	Newly Served		Newly Served		Served	Exits	Last Day	Avg LOS (Weeks)	DHR	CSA	DJ	DDA	MSDE			In-State Private	OOS Agencies	OOS Private Pay & N/A	
	First	Served	Male	Female									MHA	LSS	Missing				
Allegany County	26	36	24	12	62	34	28	38.00	48%	0%	52%	0%	0%	0%	0%	0%	0%	0%	
Anne Arundel County	114	83	47	36	197	59	138	39.00	61%	0%	36%	0%	0%	3%	0%	0%	0%	0%	
Baltimore City	2,128	960	500	460	3,088	745	2,343	75.00	89%	0%	9%	0%	0%	1%	0%	0%	0%	0%	
Baltimore County	525	339	190	149	864	257	607	52.00	88%	0%	10%	0%	0%	1%	0%	0%	0%	0%	
Calvert County	33	35	25	10	68	27	41	46.00	62%	3%	35%	0%	0%	0%	0%	0%	0%	0%	
Caroline County	26	10	7	3	36	7	29	35.00	58%	0%	33%	0%	0%	6%	0%	3%	0%	0%	
Carroll County	26	39	29	10	65	36	29	30.00	43%	0%	55%	0%	0%	2%	0%	0%	0%	0%	
Cecil County	48	54	33	21	102	30	72	23.00	83%	0%	15%	0%	0%	2%	0%	0%	0%	0%	
Charles County	38	35	24	11	73	31	42	64.00	63%	1%	34%	0%	0%	1%	0%	0%	0%	0%	
Dorchester County	23	13	11	2	36	9	27	31.00	53%	0%	44%	0%	0%	3%	0%	0%	0%	0%	
Frederick County	59	53	32	21	112	48	64	34.00	82%	0%	13%	0%	0%	4%	0%	0%	0%	0%	
Garrett County	15	17	12	5	32	12	20	19.00	84%	0%	16%	0%	0%	0%	0%	0%	0%	0%	
Harford County	119	95	53	42	214	79	135	42.00	83%	0%	15%	0%	0%	1%	0%	0%	0%	0%	
Howard County	39	36	20	16	75	26	49	41.00	77%	0%	15%	0%	0%	7%	0%	1%	0%	0%	
Kent County	16	4	4	0	20	5	15	37.00	40%	0%	45%	0%	0%	10%	0%	5%	0%	0%	
Montgomery County	242	159	83	76	401	154	247	52.00	77%	0%	17%	1%	0%	3%	0%	1%	0%	0%	
Out Of State	84	46	38	8	130	26	104	45.00	2%	3%	0%	0%	1%	1%	0%	0%	78%	15%	
Prince George's County	597	358	240	118	955	279	676	46.00	74%	0%	26%	0%	0%	1%	0%	0%	0%	0%	
Queen Anne's County	15	8	5	3	23	9	14	52.00	48%	0%	48%	4%	0%	0%	0%	0%	0%	0%	
Somerset County	38	20	11	9	58	13	45	44.00	84%	0%	12%	0%	0%	3%	0%	0%	0%	0%	
St. Mary's County	68	59	30	29	127	43	84	69.00	89%	0%	11%	0%	0%	0%	0%	0%	0%	0%	
Talbot County	28	20	13	7	48	11	37	35.00	71%	0%	27%	0%	0%	2%	0%	0%	0%	0%	
Unknown	0	1	1	0	1	0	1	0.00	0%	0%	0%	0%	0%	0%	0%	0%	100%	0%	
Washington County	73	117	70	47	190	96	94	26.00	74%	0%	21%	0%	0%	0%	0%	0%	1%	4%	
Wicomico County	86	69	55	14	155	54	101	68.00	34%	0%	65%	1%	0%	0%	0%	0%	0%	0%	
Worcester County	34	24	15	9	58	23	35	66.00	66%	0%	34%	0%	0%	0%	0%	0%	0%	0%	
All Jurisdictions:	4500	2690	1572	1118	7190	2113	5077	56.00	79.91%	0.00%	16.48%	0.24%	0.00%	1.34%	0.00%	0.17%	1.51%	0.36%	

Summary Report

S 97.96% **IP** 0.17% **OP:** 0.36% **O** 1.51%
DHR: 79.91% **CS** 0.00% **MH** 0.00% **OOS Private** 0.00%
DJS: 16.48% **DDA** 0.24% **MSDE/LS** 1.34% **N/A:** 0.36%

Note: **S** (Maryland State Agency *DHR, CSA, DJS, DDA, MHA, MSDE/LSS*), **IP** (In-State Maryland Private Pay), **OP** (Out-of-State Private Pay and N/A), **O** (Out-of-State Agency)



Status Report - Served By Jurisdiction

Start Date: 07/01/2012- End Date: 06/30/2013

Jurisdiction	Population Flow Counts: Children							Leading Referral Agency: % Breakdown of Referrals										
	Newly Served		Newly Served		Served	Exits	Last Day	Avg LOS (Weeks)	DHR	CSA	DJ	DDA	MSDE			In-State Private	OOS Agencies	OOS Private Pay & N/A
	First	Served	Male	Femal									/LSS	Missing				
Allegany County	28	37	20	17	65	29	36	46.00	38%	2%	58%	2%	0%	0%	0%	0%	0%	0%
Anne Arundel County	138	116	73	43	254	63	191	35.00	54%	0%	43%	0%	0%	2%	0%	0%	0%	0%
Baltimore City	2,343	898	497	401	3,241	563	2,678	62.00	88%	0%	10%	0%	0%	1%	0%	0%	0%	0%
Baltimore County	607	314	179	135	921	201	720	43.00	90%	0%	9%	0%	0%	1%	0%	0%	0%	0%
Calvert County	41	47	35	12	88	28	60	35.00	61%	5%	34%	0%	0%	0%	0%	0%	0%	0%
Caroline County	29	12	6	6	41	6	35	20.00	71%	0%	22%	0%	0%	5%	0%	2%	0%	0%
Carroll County	29	26	16	10	55	31	24	30.00	42%	0%	56%	0%	0%	2%	0%	0%	0%	0%
Cecil County	72	44	22	22	116	27	89	30.00	82%	0%	16%	0%	0%	3%	0%	0%	0%	0%
Charles County	42	38	20	18	80	27	53	57.00	61%	1%	36%	0%	0%	1%	0%	0%	0%	0%
Dorchester County	27	12	12	0	39	9	30	25.00	41%	0%	56%	0%	0%	3%	0%	0%	0%	0%
Frederick County	64	59	36	23	123	53	70	53.00	71%	0%	24%	1%	0%	4%	0%	0%	0%	0%
Garrett County	20	13	8	5	33	14	19	35.00	79%	0%	21%	0%	0%	0%	0%	0%	0%	0%
Harford County	135	82	34	48	217	63	154	51.00	79%	0%	18%	0%	0%	2%	0%	0%	0%	0%
Howard County	49	32	23	9	81	26	55	48.00	74%	0%	17%	0%	0%	6%	0%	2%	0%	0%
Kent County	15	4	4	0	19	1	18	14.00	47%	0%	37%	0%	0%	11%	0%	5%	0%	0%
Montgomery County	247	166	112	54	413	134	279	37.00	76%	0%	18%	1%	0%	3%	0%	1%	0%	0%
Out Of State	104	45	37	8	149	17	132	27.00	1%	3%	0%	0%	1%	1%	0%	0%	82%	13%
Prince George's County	676	327	192	135	1,003	256	747	43.00	73%	0%	26%	0%	0%	0%	0%	0%	0%	0%
Queen Anne's County	14	19	15	4	33	10	23	36.00	36%	0%	61%	3%	0%	0%	0%	0%	0%	0%
Somerset County	45	19	10	9	64	19	45	54.00	83%	0%	14%	0%	0%	3%	0%	0%	0%	0%
St. Mary's County	84	31	19	12	115	41	74	61.00	82%	1%	17%	1%	0%	0%	0%	0%	0%	0%
Talbot County	37	12	4	8	49	12	37	91.00	69%	0%	29%	0%	0%	2%	0%	0%	0%	0%
Unknown	1	0	0	0	1	0	1	0.00	0%	0%	0%	0%	0%	0%	0%	0%	100%	0%
Washington County	94	114	55	59	208	107	101	30.00	78%	0%	20%	0%	0%	0%	0%	0%	0%	2%
Wicomico County	101	52	39	13	153	40	113	28.00	34%	0%	65%	1%	0%	0%	0%	0%	0%	0%
Worcester County	35	15	8	7	50	10	40	47.00	66%	0%	34%	0%	0%	0%	0%	0%	0%	0%
All Jurisdictions:	5077	2534	1476	1058	7611	1787	5824	48.00	78.44%	0.00%	17.73%	0.21%	0.00%	1.44%	0.00%	0.21%	1.67%	0.30%

Summary Report

S 97.81% **IP** 0.21% **OP:** 0.30% **O** 1.67%
DHR: 78.44% **CS** 0.00% **MH** 0.00% **OOS Private** 0.00%
DJS: 17.73% **DDA** 0.21% **MSDE/LS** 1.44% **N/A:** 0.30%

Note: **S** (Maryland State Agency *DHR, CSA, DJS, DDA, MHA, MSDE/LSS*), **IP** (In-State Maryland Private Pay), **OP** (Out-of-State Private Pay and N/A), **O** (Out-of-State Agency)

APPENDIX B:

Indicators Proposed to Measure Children's Outcomes in CSOMS

Area of Child Functioning	Proposed Performance Measures
Protection from harm:	<ul style="list-style-type: none"> - Rate of incidents per child involving harm (injuries or unplanned emergency care, medication error, abuse while at the current placement, sexual assault where child/youth is victim, death of child) per 100 child days [count each child identified in incident report as 1 – not each incident per child] - Average ratio of incidents involving harm to children [per report] - Rate of change in number of incidents involving harm per child [per report]
Stability of living environment:	<ul style="list-style-type: none"> - Average and median # of days per child (only exited cases) - # and % of cases exited to a permanency resource
Efforts to treat and counsel the family:	<ul style="list-style-type: none"> - CANS Family, Family Environment: % of cases with needs in the CANS item at placement and exit
Education and vocational status:	<ul style="list-style-type: none"> - CANS School Achievement, School Attendance, Educational Strengths: % of cases with needs in the CANS item at placement and exit
Job skills and employment readiness:	<ul style="list-style-type: none"> - CANS Vocational Strengths, Job Functioning: % of cases with needs in the CANS item at placement and exit
Legal and appropriate use of drugs and alcohol	<ul style="list-style-type: none"> - CANS Substance Abuse: % of cases with needs in the CANS item at placement and exit - Rate of incidents per child involving use of drugs and alcohol (possession or use of illegal substances)
Progress in learning non-aggressive behavioral habits:	<ul style="list-style-type: none"> - CANS Behavioral/Emotional Needs Section: <ul style="list-style-type: none"> ▪ % of cases with needs in the CANS item at placement and exit ▪ % of cases who meet the Reliable Change Index - Rate of incidents per child involving aggressive behaviors (physical assault, restraint, self-harm, sexual assault, sexual harassment, homicidal attempt or threat, property destruction, theft)
Delinquency status:	<ul style="list-style-type: none"> - CANS Legal, Delinquency: % of cases with needs in the CANS item at placement and exit